

Genome-Wide Location and Function of DNA Binding Proteins

Bing Ren,^{1*} François Robert,^{1*} John J. Wyrick,^{1,2*}
Oscar Aparicio,^{2,4} Ezra G. Jennings,^{1,2} Itamar Simon,¹
Julia Zeitlinger,¹ Jörg Schreiber,¹ Nancy Hannett,¹
Elenita Kanin,¹ Thomas L. Volkert,¹ Christopher J. Wilson,⁵
Stephen P. Bell,^{2,3} Richard A. Young^{1,2†}

Understanding how DNA binding proteins control global gene expression and chromosomal maintenance requires knowledge of the chromosomal locations at which these proteins function in vivo. We developed a microarray method that reveals the genome-wide location of DNA-bound proteins and used this method to monitor binding of gene-specific transcription activators in yeast. A combination of location and expression profiles was used to identify genes whose expression is directly controlled by Gal4 and Ste12 as cells respond to changes in carbon source and mating pheromone, respectively. The results identify pathways that are coordinately regulated by each of the two activators and reveal previously unknown functions for Gal4 and Ste12. Genome-wide location analysis will facilitate investigation of gene regulatory networks, gene function, and genome maintenance.

Many proteins bind to specific sites in the genome to regulate genome expression and maintenance. Transcriptional activators, for example, bind to specific promoter sequences and recruit chromatin modifying complexes and the transcription apparatus to initiate RNA synthesis (1–3). The reprogramming of gene expression that occurs as cells move through the cell cycle, or when cells sense changes in their environment, is effected in part by changes in the DNA binding status of transcriptional activators. Distinct DNA binding proteins are also associated with origins of DNA replication, centromeres, telomeres, and other sites, where they regulate chromosome replication, condensation, cohesion, and other aspects of genome maintenance (4, 5). Our understanding of these proteins and their functions is limited by our knowledge of their binding sites in the genome.

The genome-wide location analysis method we have developed allows protein-DNA interactions to be monitored across the entire yeast genome (6). The method combines a modified chromatin immunoprecipitation (ChIP) procedure, which has been previously used to study protein-DNA interactions at a small number of

specific DNA sites (7), with DNA microarray analysis. Briefly, cells were fixed with formaldehyde, harvested, and disrupted by sonication. The DNA fragments cross-linked to a protein of interest were enriched by immunoprecipitation with a specific antibody. After reversal of the cross-links, the enriched DNA was amplified and labeled with a fluorescent dye (Cy5) with the use of ligation-mediated-polymerase chain reaction (LM-PCR). A sample of DNA that was not enriched by immunoprecipitation was subjected to LM-PCR in the presence of a different fluorophore (Cy3), and both immunoprecipitation (IP)-enriched and -unenriched pools of labeled DNA were hybridized to a single DNA microarray containing all yeast intergenic sequences (Fig. 1). A single-array error model (8) was adopted to handle noise associated with low-intensity spots and to permit a confidence estimate for binding (P value). When independent samples of 1 ng of genomic DNA were amplified with the LM-PCR method, signals for greater than 99.8% of genes were essentially identical within the error range (P value $\leq 10^{-3}$). The IP-enriched/unenriched ratio of fluorescence intensity obtained from three independent experiments was used with a weighted average analysis method to calculate the relative binding of the protein of interest to each sequence represented on the array.

To investigate the accuracy of the genome-wide location analysis method, we used it to identify sites bound by the transcriptional activator Gal4 in the yeast genome. Gal4 activates genes necessary for galactose metabolism and is among the best characterized transcriptional activators (1, 9). We found 10 genes to be bound by Gal4 (P value ≤ 0.001) and induced

in galactose using our analysis criteria (Fig. 2A). These included seven genes previously reported to be regulated by Gal4 (*GAL1*, *GAL2*, *GAL3*, *GAL7*, *GAL10*, *GAL80*, and *GCY1*). The *MTH1*, *PCL10*, and *FUR4* genes were also bound by Gal4 and activated in galactose. Each of these results was confirmed by conventional ChIP analysis (Fig. 2B) (6), and *MTH1*, *PCL10*, and *FUR4* activation in galactose was found to be dependent on Gal4 (Fig. 2C). Both microarray and conventional ChIP showed that Gal4 binds to *GAL1*, *GAL2*, *GAL3*, and *GAL10* promoters under glucose and galactose conditions, but the binding was generally weaker in

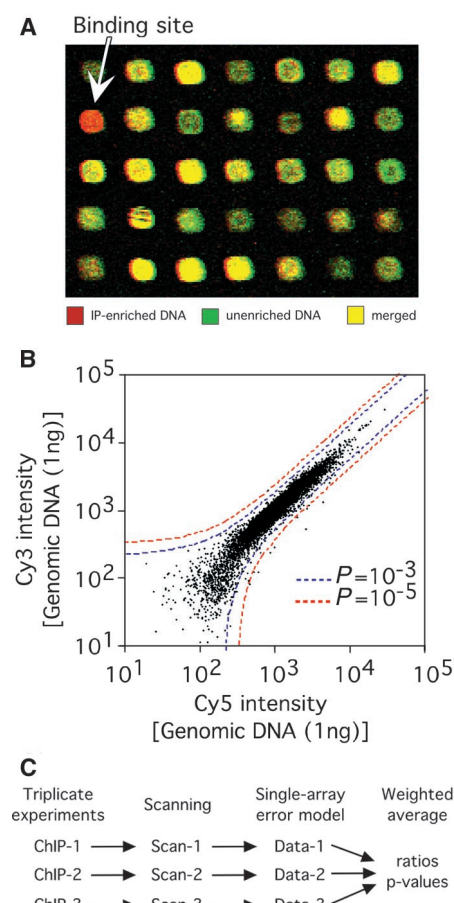


Fig. 1. The genome-wide location profiling method. (A) Close-up of a scanned image of a microarray containing DNA fragments representing 6361 intergenic regions of the yeast genome. The arrow points to a spot where the red intensity is over-represented, identifying a region bound in vivo by the protein under investigation. (B) Analysis of Cy3- and Cy5-labeled DNA amplified from 1 ng of yeast genomic DNA using a single-array error model (8). The error model cutoffs for P values equal to 10^{-3} and 10^{-5} are displayed. (C) Experimental design. For each factor, three independent experiments were performed and each of the three samples were analyzed individually using a single-array error model. The average binding ratio and associated P value from the triplicate experiments were calculated using a weighted average analysis method (6).

¹Whitehead Institute for Biomedical Research, Nine Cambridge Center, Cambridge, MA 02142, USA. ²Department of Biology, Massachusetts Institute of Technology, Cambridge, MA 02139, USA. ³Howard Hughes Medical Institute, Massachusetts Institute of Technology, Cambridge, MA 02139, USA. ⁴Program in Molecular Biology University of Southern California, Los Angeles, CA 90089–1340, USA. ⁵Corning, Inc., Corning, NY 14834, USA.

*These authors contributed equally to this work.

†To whom correspondence should be addressed. E-mail: young@wi.mit.edu

glucose (6). The consensus Gal4 binding sequence that occurs in the promoters of these genes (CGGN₁₁CCG) can also be found at many sites through the yeast genome where Gal4 binding is not detected; therefore, sequence alone is not sufficient to account for the specificity of Gal4 binding in vivo. Previous studies of Gal4-DNA binding have suggested that additional factors such as chromatin structure contribute to specificity in vivo (10, 11).

The identification of *MTH1*, *PCL10*, and *FUR4* as Gal4-regulated genes reveals previously unknown functions for Gal4 and explains how regulation of several different metabolic pathways can be coordinated (Fig. 2D). *MTH1* encodes a transcriptional repressor of certain *HXT* genes involved in hexose transport (12). Our results suggest that the cell responds to galactose by increasing the concentration of its galactose transporter at the expense of other transporters. In other words, while Gal4 activates expression of the galactose transporter gene *GAL2*, Gal4 induction of the *MTH1* re-

pressor gene leads to reduced levels of glucose transporter expression. The *Pcl10* cyclin associates with Pho85p and appears to repress the formation of glycogen (13). Thus, the observation that *PCL10* is Gal4-activated suggests that reduced glycogenesis occurs to maximize the energy obtained from galactose metabolism. *FUR4* encodes a uracil permease (14), and its induction by Gal4 may reflect a need to increase intracellular pools of pyrimidines to permit efficient uridine 5'-diphosphate (UDP) addition to galactose catalyzed by Gal7.

We next investigated the genome-wide binding profile of the transcription activator Ste12, which functions in the response of haploid yeast to mating pheromones (15). Activation of the pheromone-response pathway by mating pheromones causes cell cycle arrest and transcriptional activation of more than 200 genes in a Ste12-dependent fashion (8, 15). However, it is not clear which of these genes is directly regulated by Ste12 and which are regulated by other ancillary factors. The genome-

wide binding profile of epitope-tagged Ste12, determined before and after pheromone treatment in three independent experiments, indicates that 29 pheromone-induced genes are regulated directly by Ste12. Figure 3A lists the yeast genes whose promoter regions are bound by Ste12 at the 99.5% confidence level (i.e., *P* value < 0.005) and whose expression is induced by α factor. These 29 genes are likely to be directly regulated by Ste12 because (i) all have promoter regions bound by Ste12, (ii) exposure to pheromone causes an increase in their transcription, and (iii) pheromone induction of transcription is dependent on Ste12.

Of the genes that are directly regulated by Ste12, 11 are already known to participate in various steps of the mating process (Fig. 3B). *FUS3* and *STE12* encode components of the signal transduction pathway involved in the response to pheromone (16); *AFR1* and *GIC2* are required for the formation of mating projections (17–19); *FIG2*, *AGA1*, *FIG1*, and *FUS1* are involved in cell fusion (20–23); and *CIK1*

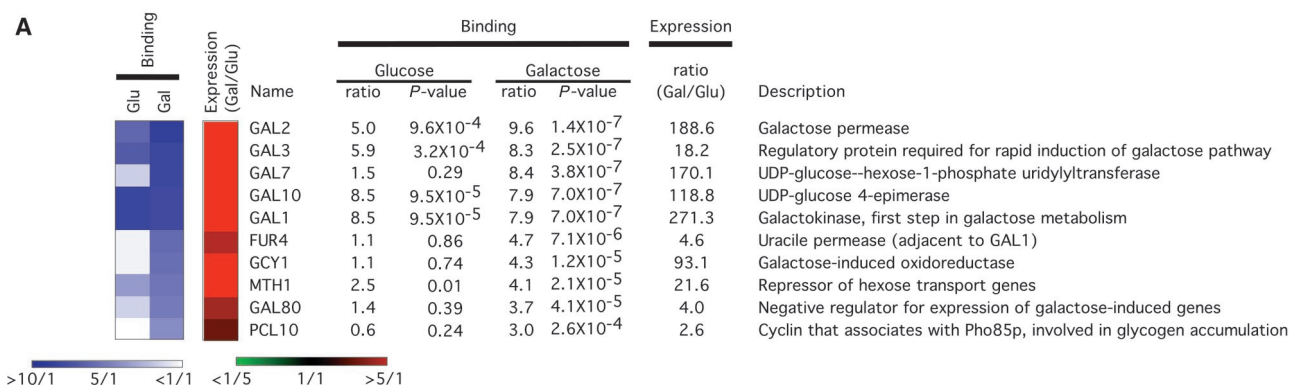
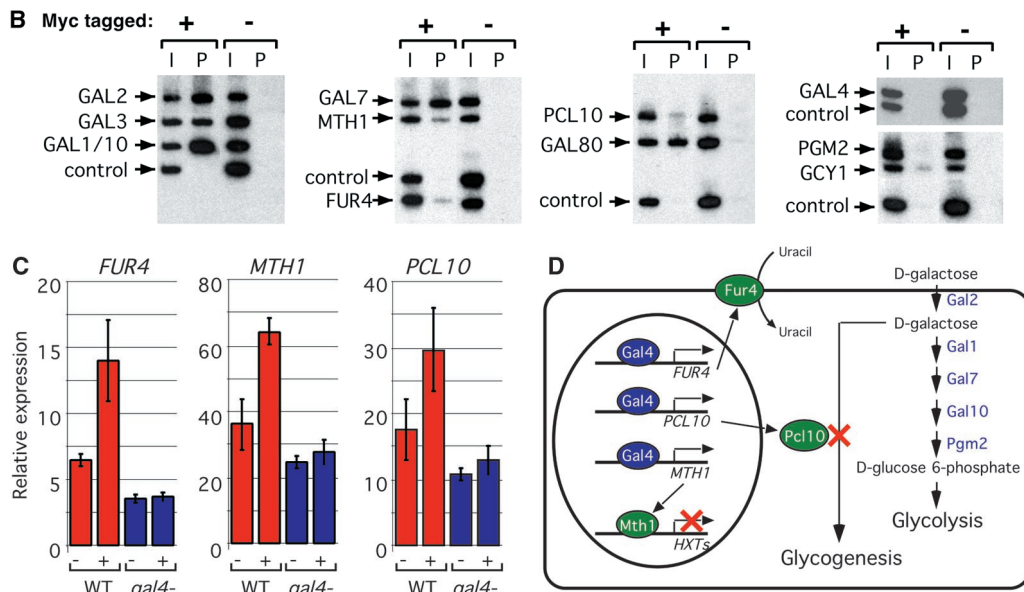


Fig. 2. Genome-wide location of Gal4 protein. (A) Genes whose promoter regions were bound by myc-tagged Gal4 (*P* value < 0.001) and whose expression levels were induced at least twofold by galactose are listed. The weight-averaged ratios and *P* values are shown for Gal4 binding in galactose and glucose. Binding ratios are also displayed using a blue and white color scheme and expression ratios of galactose/glucose are displayed using a red and green color scheme. (B) Confirmation of microarray data for each gene in panel A using conventional chromatin IP procedure. Strains with (+) or without (–) a myc-tagged Gal4 protein were grown in galactose. Amplification of the unenriched DNA (I) and IP-enriched DNA (P) is shown. *ARN1* (control) was used as a negative control. (C) Galactose-induced expression of *FUR4*, *MTH1*, and *PCL10* is Gal4-dependent. Samples from wild-type and *gal4*– strains were taken before and after addition of galactose. The expression of *FUR4*, *MTH1*, and *PCL10* was monitored by quantitative reverse transcriptase-PCR (RT-PCR)

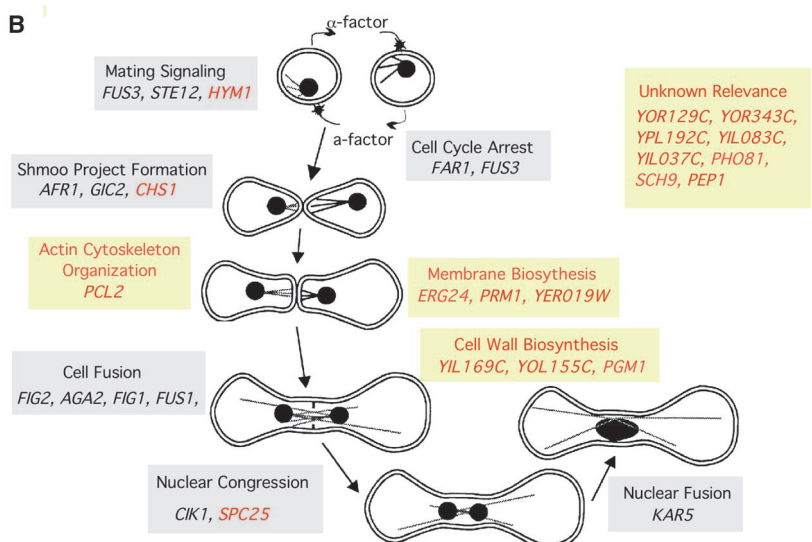


and was quantified by phosphorimaging. (D) Model summarizing the role of Gal4 in galactose-dependent cellular regulation. The products of genes newly identified as directly regulated by Gal4 are shown as green circles; those previously identified are shown in blue.

The genes that are regulated by Ste12 can be divided into two classes: those bound by Ste12 both before and after pheromone exposure (e.g., *STE12*, *PCL2*, *FIG2*, and *FUS1*) and those bound by Ste12 only after exposure to pheromone (e.g., *CIK1* and *CHS1*) (Fig. 3A). The first class of genes is induced immediately after pheromone exposure, most likely by a mechanism that converts an inactive DNA-bound Ste12 protein to an active transcriptional activator. This could take place by removal of repressors of Ste12 such as Dig1/Rst1 and Dig2/Rst2 (28). In the second class of genes, induction of transcription is relatively slow. In

We have shown that a combination of genome-wide location and expression analysis can identify the global set of genes whose expression is controlled directly by transcriptional activators *in vivo*. The application of location analysis to two yeast transcriptional activators revealed how multiple functional pathways are coordinately controlled *in vivo*.

diately after α factor treatment to untreated cells. The Gal:Ste12 and Ste12 Δ data were obtained by comparing Gal:Ste12 (over-expressing Ste12) and Ste12 Δ cells to wild-type cells, respectively. Ste12 Δ + α data were obtained by comparing cells lacking Ste12 before and 30 min after α factor treatment. **(B)** Model summarizing the role of Ste12 target genes in the yeast mating pathway. Gray boxes denote the cellular processes known to be involved in mating; yellow boxes denote cellular processes that may be associated with mating. Genes in black were previously reported to be associated with the mating process; genes in red are Ste12 targets that may play a role in mating.



during the response to specific changes in the extracellular environment. All of the known targets for these two activators were confirmed, and functional modules were discovered that are regulated directly by these factors.

Expression analysis with DNA microarrays allows investigators to identify changes in mRNA levels in living cells, but the inability to distinguish direct from indirect effects limits the interpretation of the data in terms of the genes that are controlled by specific regulatory factors. Genome-wide location analysis provides information on the binding sites at which proteins reside through the genome under various conditions in vivo, and will prove to be a powerful tool for further discovery of global regulatory networks.

References and Notes

1. M. Ptashne, A. Gann, *Nature* **386**, 569 (1997).
2. T. I. Lee, R. A. Young, *Annu. Rev. Genet.* **34**, 77 (2000).
3. S. Malik, R. G. Roeder, *Trends Biochem. Sci.* **25**, 277 (2000).
4. T. J. Kelly, G. W. Brown, *Annu. Rev. Biochem.* **69**, 829 (2000).

5. A. Dutta, S. P. Bell, *Annu. Rev. Cell Dev. Biol.* **13**, 293 (1997).
6. Complete experimental protocols and other information are available at *Science* Online at www.sciencemag.org/cgi/content/full/290/5500/2309/DC1 and on the author's Web site at <http://web.wi.mit.edu/young/location>.
7. V. Orlando, *Trends Biochem. Sci.* **25**, 99 (2000).
8. C. J. Roberts et al., *Science* **287**, 873 (2000).
9. M. Johnston, M. Carlson, in *The Molecular and Cellular Biology of the Yeast Saccharomyces*, E. W. Jones, J. R. Pringle, J. R. Broach, Eds. (Cold Spring Harbor Laboratory Press, Cold Spring Harbor, NY, 1992), vol. 2, pp. 193–281.
10. D. I. Chasman et al., *Genes Dev.* **4**, 503 (1990).
11. R. Marmorestein, M. Carey, M. Ptashne, S. C. Harrison, *Nature* **356**, 408 (1992).
12. M. C. Schmidt et al., *Mol. Cell. Biol.* **19**, 4561 (1999).
13. D. Huang et al., *Mol. Cell. Biol.* **18**, 3289 (1998).
14. R. Jund, E. Weber, M. R. Chevallier, *Eur. J. Biochem.* **171**, 417 (1988).
15. G. F. Sprague Jr., J. Thorner, in *The Molecular and Cellular Biology of the Yeast Saccharomyces*, E. W. Jones, J. R. Pringle, J. R. Broach, Eds. (Cold Spring Harbor Laboratory Press, Cold Spring Harbor, NY, 1992), vol. 2, pp. 657–744.
16. H. D. Madhani, G. R. Fink, *Trends Genet.* **14**, 151 (1998).
17. J. B. Konopka, *Mol. Cell. Biol.* **13**, 6876 (1993).
18. J. L. Brown, M. Jaquenoud, M. P. Gullii, J. Chant, M. Peter, *Genes Dev.* **11**, 2972 (1997).

19. G. C. Chen, Y. J. Kim, C. S. Chan, *Genes Dev.* **11**, 2958 (1997).
20. S. Erdman, L. Lin, M. Malczynski, M. Snyder, *J. Cell Biol.* **140**, 461 (1998).
21. A. Roy, C. F. Lu, D. L. Marykwas, P. N. Lipke, J. Kurjan, *Mol. Cell. Biol.* **11**, 4196 (1991).
22. J. Trueheart, J. D. Boeke, G. R. Fink, *Mol. Cell. Biol.* **7**, 2316 (1987).
23. G. McCaffrey, F. J. Clay, K. Kelsay, G. F. Sprague Jr., *Mol. Cell. Biol.* **7**, 2680 (1987).
24. L. Marsh, M. D. Rose, in *The Molecular and Cellular Biology of the Yeast Saccharomyces*, J. R. Pringle, J. R. Broach, E. W. Jones, Eds. (Cold Spring Harbor Laboratory Press, Cold Spring Harbor, 1997), vol. 3, pp. 827–888.
25. F. Chang, I. Herskowitz, *Cell* **63**, 999 (1990).
26. H. Fujimura, *Curr. Genet.* **18**, 395 (1990).
27. P. T. Spellman et al., *Mol. Biol. Cell* **9**, 3273 (1998).
28. K. A. Olson et al., *Mol. Cell. Biol.* **20**, 4199 (2000).
29. We thank P. Cosma, K. Nasmyth, V. Myer, F. Holstege, and F. Lewitter for reagents, protocols, and helpful discussions. Supported by funds from Corning, Inc., NIH (R.A.Y. and S.P.B.), Helen Hay Whitney Foundation (B.R.), National Cancer Institute of Canada (F.R.), NSF (J.J.W.), Burroughs-Wellcome Fund (O.A.), Howard Hughes Medical Institute (E.G.J. and S.P.B.), European Molecular Biology Organization (I.S.), and the Human Frontier Science Program (J.Z.).

18 September 2000; accepted 16 November 2000

Inhibition of Eukaryotic DNA Replication by Geminin Binding to Cdt1

James A. Wohlschlegel,¹ Brian T. Dwyer,¹ Suman K. Dhar,¹ Christin Cvetic,² Johannes C. Walter,² Anindya Dutta^{1*}

In all eukaryotic organisms, inappropriate firing of replication origins during the G₂ phase of the cell cycle is suppressed by cyclin-dependent kinases. Multicellular eukaryotes contain a second putative inhibitor of re-replication called geminin. Geminin is believed to block binding of the mini-chromosome maintenance (MCM) complex to origins of replication, but the mechanism of this inhibition is unclear. Here we show that geminin interacts tightly with Cdt1, a recently identified replication initiation factor necessary for MCM loading. The inhibition of DNA replication by geminin that is observed in cell-free DNA replication extracts is reversed by the addition of excess Cdt1. In the normal cell cycle, Cdt1 is present only in G₁ and S, whereas geminin is present in S and G₂ phases of the cell cycle. Together, these results suggest that geminin inhibits inappropriate origin firing by targeting Cdt1.

Eukaryotic cells maintain a tight control on the initiation of DNA replication to ensure that chromosome duplication in S phase and chromosome segregation in M phase strictly alternate with each other so that daughter cells do not receive too many or too few chromosomes. Fusion of cells in the G₂ phase of the cell cycle to those in S phase revealed that the G₂ nuclei were unable to replicate their DNA, although

conditions in the heterokaryon were permissive for replication in the S phase nuclei (1). This observation led to the hypothesis that G₂ nuclei lack a factor essential for replication initiation and/or possess a negative factor that prevents replication initiation. For the initiation of DNA replication in eukaryotes, the origin recognition complex (ORC) binds to initiator elements and recruits the CDC6 and Cdt1 proteins to chromatin in the G₁ phase of the cell cycle. The latter, in turn, are required to recruit the MCM complex to form the pre-replication complex (pre-RC). After origin firing at the beginning of S phase, the pre-RC is dissociated and is not re-assembled until the cell passes through mitosis into the G₁ phase of the next cell-cycle. As factors essential for replication initiation were

discovered, it became clear that some of them become limiting in G₂ nuclei (2, 3). In particular, CDC6 is exported out of the nucleus (or proteolyzed in yeast) as S phase proceeds, while the MCM proteins are phosphorylated and become dissociated from the chromatin (or exported out of the nucleus in yeast). In addition, the elevated activity of cyclin-dependent kinase (cdk) in the G₂-M phase of the cell cycle blocks re-replication by preventing assembly of pre-RC even when initiation factors such as CDC6 are artificially expressed or stabilized in G₂ nuclei (4–6). Therefore, the absence of initiation factors and the presence of negative factors prevent a second round of origin firing until cells pass through mitosis.

Geminin was identified in a screen for proteins that are degraded in mitotic extracts from *Xenopus* eggs and was shown to inhibit DNA replication by preventing the loading of MCM complex on chromatin (7). The target of geminin in this inhibitory reaction was unclear, but its expression in S and G₂ led to the suggestion that it provides an additional mechanism to prevent re-replication in the normal cell cycle. To identify the target of geminin, we raised antibodies to bacterially expressed His6-geminin (Fig. 1A) (8). Immunoblotting of extracts from 293T cells with this antibody recognized the 33-kD geminin protein in cell extracts (Fig. 1A). Immunoprecipitation of ³⁵S-methionine labeled cell extracts indicated that the 33-kD geminin protein co-immunoprecipitated with cellular proteins of 65 and 130 kD (Fig. 1B) (9). Re-immunoprecipitation with antibody to geminin under denaturing conditions precipitated geminin but not the 65- and 130-kD polypeptides (Fig. 1B). These results suggest that the 65- and 130-kD polypeptides were present in the native anti-geminin immunopre-

¹Department of Pathology, Brigham and Women's Hospital, Harvard Medical School, 75 Francis Street, Boston, MA 02115, USA. ²Department of Biological Chemistry and Molecular Pharmacology, Harvard Medical School, 240 Longwood Avenue, Boston, MA 02115, USA.

*To whom correspondence should be addressed. E-mail: adutta@rics.bwh.harvard.edu

Genome-Wide Location and Function of DNA Binding Proteins

Bing Ren, François Robert, John J. Wyrick, Oscar Aparicio, Ezra G. Jennings, Itamar Simon, Julia Zeitlinger, Jörg Schreiber, Nancy Hannett, Elenita Kanin, Thomas L. Volkert, Christopher J. Wilson, Stephen P. Bell and Richard A. Young

Science **290** (5500), 2306-2309.
DOI: 10.1126/science.290.5500.2306

ARTICLE TOOLS

<http://science.sciencemag.org/content/290/5500/2306>

SUPPLEMENTARY MATERIALS

<http://science.sciencemag.org/content/suppl/2001/03/06/290.5500.2306.DC1>

REFERENCES

This article cites 24 articles, 13 of which you can access for free
<http://science.sciencemag.org/content/290/5500/2306#BIBL>

PERMISSIONS

<http://www.sciencemag.org/help/reprints-and-permissions>

Use of this article is subject to the [Terms of Service](#)